



Automated Nucleic Acid Extraction System-32



Automated nucleic extraction system, as model AU1001, uses advanced magnetic technology to process 32 samples within 30-50 minutes. It offers a user friendly interface that could edit, run and store multiple programs. Extracted nucleic acid can be used in a number of downstream applications such as blood screening, monitoring diseases and post treatments, genetic drug therapies, and biological research. moreover, extracted DNA/RNA could also be used for real-time PCR with the PCR test kits."

Characteristics:

- Touch screen interface operation
- Sample batch: 8–32 samples
- Built-in Timing UV sterilization
- Both available for PCR and RT-PCR directly
- Temperature control: 4 °C-120 °C, built-in cooling & heating module
- Fast extraction: 32 samples 30-50 minutes per run, less time as per batch size
- Switchable modules: 16/32
- Pre-programmed capability
- High purity and yield efficiency

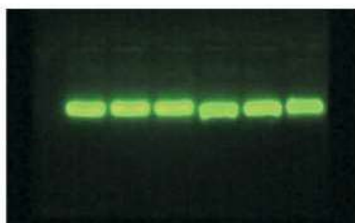
Benefits:

1. Lower purchase cost than domestic & exterior brands
2. Better instrument quality than Qiagen, offer better Reagent&Kits than Qiagen
3. Lower maintenance cost
4. 12 months warranty
5. Offer private labeling service

Experimental examples:

A、 Tissue sample:

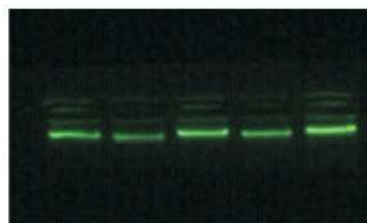
No.	Abs260	Abs280	Abs230	OD260/280	OD260/230	Concentration	Sample Type
1	2.545	1.381	1.241	2.05	1.84	127.2590ng/ul	dDNA
2	2.248	1.219	1.125	2	1.84	112.3997ng/ul	dDNA
3	5.667	3.026	2.861	1.98	1.87	283.3428ng/ul	dDNA
4	5.148	2.672	2.709	1.9	1.93	257.3932ng/ul	dDNA
5	5.849	3.16	2.861	2.04	1.85	292.4626ng/ul	dDNA
6	6.14	3.276	3.19	1.92	1.87	307.0159ng/ul	dDNA



Note: tumor tissue, 200ul elution volume and OD value is consistent with gel hole sequence.

B、 Fresh whole blood :

No.	Abs260	Abs280	Abs230	OD260/230	OD260/280	Concentration	Sample Type
1	1.471	0.856	1.724	2.01	1.82	73.5512ng/ul	dDNA
2	1.211	0.63	0.595	2.04	1.92	60.5255ng/ul	dDNA
3	1.604	0.888	1.039	2.06	1.81	80.2013ng/ul	dDNA
4	1.26	0.671	0.608	2.07	1.88	62.9818ng/ul	dDNA
5	2.239	1.246	1.051	2.13	1.8	111.9495ng/ul	dDNA



Note : human whole blood 200ul and elution volume 120ul. OD value is consistent with gel hole sequence.

info@helini.in