



Automated Nucleic Acid Extraction System-96

The high throughput 96 flux Automated nucleic extraction system, as model AU1001-96, offers fully automated solution from low, medium and high throughput processing need for nucleic acid samples extraction with high purity, reproducibility, concentration, low salinity by using state of arts of magnetic bead based technology. The DNARNA extracted can be used directly in downstream processes."

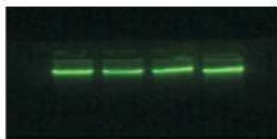


Characteristics:

- Touch screen operation
- Exchangeable modules
- Switchable 24/96 magnetic rod
- Pre-programmed capability
- Built-in Timing UV sterilization
- High purity and yield efficiency
- Available for PCR and RT-PCR directly
- Temperature control 4°C-120°C, built-in cooling & heating module
- Fast extraction 30-50 min per run for processing 96 samples Multiple sample modules
- Re-productivity stability: Magnetic beads adsorption efficiency >95%

C、Coagulated blood :

No.	Abs260	Abs280	Abs230	OD260/230	OD260/280	Concentration	Sample Type
1	2.383	1.344	1.25	1.91	1.77	119.1337ng/ul	dDNA
2	2.472	1.375	1.263	1.96	1.8	123.5882ng/ul	dDNA
3	1.438	0.813	0.79	1.82	1.77	71.9120ng/ul	dDNA
4	1.793	1.008	0.94	1.91	1.78	89.6575ng/ul	dDNA



Note : human whole blood 200ul and elution volume 120ul. OD value is consistent with gel hole sequence.

D、Heparin blood :

No.	Abs260	Abs280	Abs230	OD260/230	OD260/280	Concentration	Sample Type
1	1.29	0.796	0.781	1.65	1.62	64.482ng/ul	dDNA
2	0.821	0.519	0.486	1.69	1.58	41.0318ng/ul	dDNA
3	0.932	0.596	0.575	1.62	1.56	46.6079ng/ul	dDNA
4	1.733	1.013	1.011	1.71	1.71	86.6648ng/ul	dDNA



Note : human whole blood 200ul and elution volume 120ul. OD value is consistent with gel hole sequence.

E、Stale blood

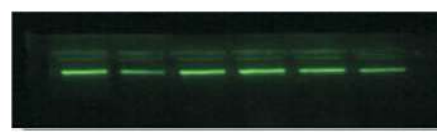
No.	Abs260	Abs280	Abs230	OD260/230	OD260/280	Concentration	Sample Type
1	1.324	0.767	0.56	2.36	1.73	66.1754ng/ul	dDNA
2	1.232	0.71	0.439	2.80	1.74	61.6120ng/ul	dDNA
3	1.471	0.841	0.616	2.39	1.75	73.5441ng/ul	dDNA
4	0.704	0.412	0.278	2.54	1.71	35.2241ng/ul	dDNA
5	1.697	0.966	0.722	2.35	1.76	84.8637ng/ul	dDNA



Note : human whole blood 200ul and elution volume 120ul. OD value is consistent with gel hole sequence.

F、Saliva genomic DNA extraction Saliva sample:

No.	Abs260	Abs280	Abs230	OD260/230	OD260/280	Concentration	Sample Type
1	1.017	0.557	0.702	1.45	1.83	50.863ng/ul	dDNA
2	0.749	0.465	0.553	1.35	1.61	37.4503ng/ul	dDNA
3	1.295	0.718	0.521	2.48	1.8	64.7529ng/ul	dDNA
4	1.687	0.882	1.002	1.68	1.91	84.3294ng/ul	dDNA
5	1.473	0.78	0.724	2.03	1.89	73.6371ng/ul	dDNA
6	0.692	0.357	0.423	1.64	1.94	34.5794ng/ul	dDNA



Note : human whole blood 200ul and elution volume 120ul. OD value is consistent with gel hole sequence.